

Open Rack Security Door System

Patented

SecurePatch® provides security for new and existing network components in an open 19" equipment rack. The SecurePatch® cover provides a security solution to only the section of the rack space you need. Safe guard against unauthorized patch cord movement by retro-fitting loaded equipment racks with the added security of a lockable door.

FEATURES

- Allows user to retro-fit a loaded equipment rack with added security **without network downtime**.
- **Strategic Deployment:** Control access to your most critical rack mount components, while allowing access to the remaining rack spaces.
- **Multiple Departments** have access to Wiring Closets. Provide a second level of security to equipment that is already in a locked closet.
- **Completely enclose equipment** on an open rack with two SecurePatch® covers. (mounted...back to back.) The units "Clamshell" around the secured equipment. Adjustment plates are available to close off top and bottom on 3" or 6" deep rack mounting rails.



Made in the USA

Secure Patch®



New & Improved Design!

Add Security to a portion or the whole rack. Install on the front, back or completely enclose with SecurePatch®

SecurePatch® Added Security without Network Downtime

Historically there has been no economical option to add Security Doors to an open equipment rack. In today's world, **PCI compliance and security of credit card transactions is a major concern!**

Now you can also add security to live network equipment without network down time! Finally, there is that Economical Option which allows you to secure live equipment on open relay racks!



SecurePatch®

No Need to Re-Terminate!

Horse shoe and side knock-outs patterns allow multiple cable access options on the sides panels. This allows for installation of the SecurePatch® cover on racks and backboards with existing cabling.

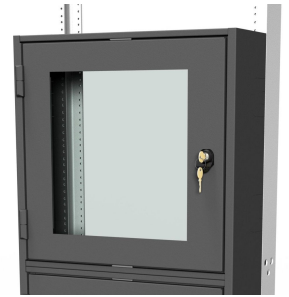
No need to bring down the network!

SPECIFICATIONS

- 16 ga. cold rolled steel
- 19" rack mounting per EIA-310-D
- **Finish:** Black Powder Coat
- **Choose:** Steel, Mesh, or Plexiglas door
- Keyed locks standard on door
- Combination locks available
- Ships unassembled
- Easy to follow assembly instructions

Ordering Information:

SecurePatch® Units ship unassembled to reduce shipping cost and limit exposure to common carrier damages. Install on new or legacy equipment racks for added security.



11U 6" Deep

11U " SecurePATCH® Complete Units (Standard Black Powder coat)

PART#	DESCRIPTION	HEIGHT	DEPTH
BSP-11U-6(x)	11U SecurePatch® with keyed Door	19.25"	6"
BSP-11U-12(x)	11U SecurePatch® with keyed Door	19.25"	12"

Replace (x) with door code: PK= Plexiglas, MK=Mesh, SK=Steel

22U SecurePATCH® Complete Units (Standard Black Powder coat)

PART#	DESCRIPTION	HEIGHT	DEPTH
BSP-22U-6(x)	22U SecurePatch® with keyed Door	38.5"	6"
BSP-22U-12(x)	22U SecurePatch® with keyed Door	38.5"	12"

Replace (x) with door code: PK= Plexiglas, MK=Mesh, SK=Steel



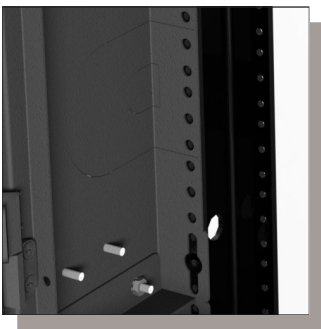
22U 6" Deep

44U SecurePATCH® KITS, Complete Units (Standard Black Powder coat)

PART#	DESCRIPTION	HEIGHT	DEPTH
BSP-44U-6(x)	2x22U SecurePatch® w/ connector brkt.s, keyed Doors	77"	6"
BSP-D44U-6(x)	4x22U Front & Rear Kit® with keyed doors	77"	6"

Replace (x) with door code: PK= Plexiglas, MK=Mesh, SK=Steel

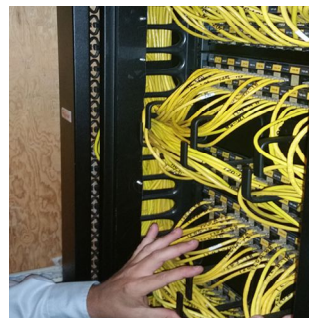
The New SecurePatch modular design allows for improved flexibility with the introduction of our **BSP-CBRKT** Connecting Bracket. This bracket enables 11U and 22U Units to be connected in any combination you need, while allowing patch cord pass thru from one unit to another. If you don't need to patch from unit to unit, order the standard 11U or 22U units above. These units come with our standard top and bottom panels.



The Mounting flange has slotted holes at the top and bottom to make mounting of the units a one person job!



The SecurePatch Mounting Flange allows it to be rack mounted...or wall mounted on a backboard to secure wall mounted equipment!



Multiple side knock-out options allow for low or high capacity cable feed through options!

Install on the Front & Rear to enclose a portion or the whole rack!



Front & Rear 44U SecurePatch Kit Consisting of (4) 22U Units connected via BSP-CBRKT.

SecurePATCH® Accessories

PART#	DESCRIPTION	QUANTITY
BSP-CBRKT	Connecting Bracket - for retrofitting (2) SecurePatch together	1
BSP-LOCK-C1	Quarter-Turn with 3 Number Combination Lock	1
BSP-ADPLATE(2)	Adjustment plates for front & rear rack installation*	2-Pk.

* NOTE: BSP-ADPLATE encloses the gap between two SecurePatch® covers installed back to back on a 3" Deep equipment rack. When the adjustment plates are installed, inside usable mounting space is reduced by 2U.